

Steady & Super Steady

ENG



TOPICS

- MASTS FROM Ø77 TO Ø250, UP TO 40M HIGH
- FOR HEAVY PAYLOADS

- FOR PROLONGED EXTENSION TIMES
- GUYING EQUIPMENT AVAILABLE

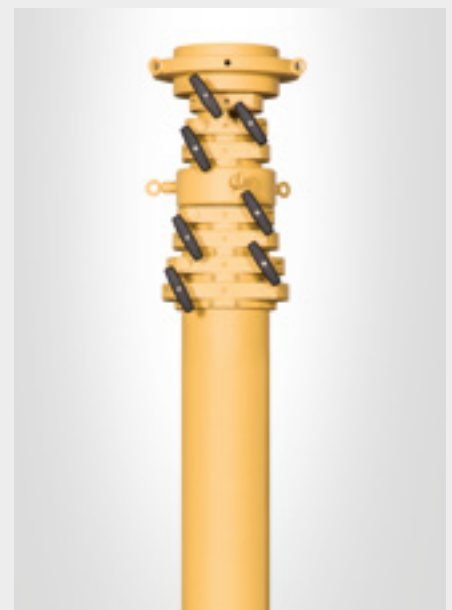
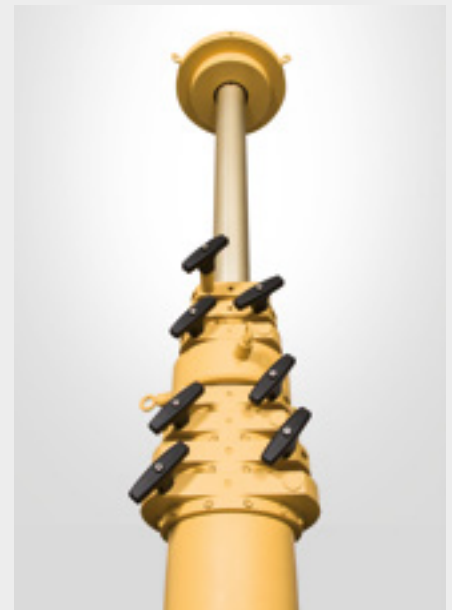
APPLICATIONS



Steady

Masts in the **STEADY** version, which are widely acknowledged on the market for their reliability, were developed to satisfy a unique demand: the possibility to keep a pneumatic mast extended

for longer periods without providing an ongoing internal air pressure. This demand has been satisfied by developing a special locking system on the single mast collars.



STEADY MASTS

Available for masts from Ø77 to Ø250mm. The standard finish and colour is silver-grey anodised: other colours and finishes are available on demand.



Locking system

The examined **locking system Steady** is a frictional device. This means that by turning the hand grip clockwise the metal band which embraces the mast section will be tightened and locks the

mast tube by friction. The frictional locking system allows every single mast tube to be locked in intermediate positions.



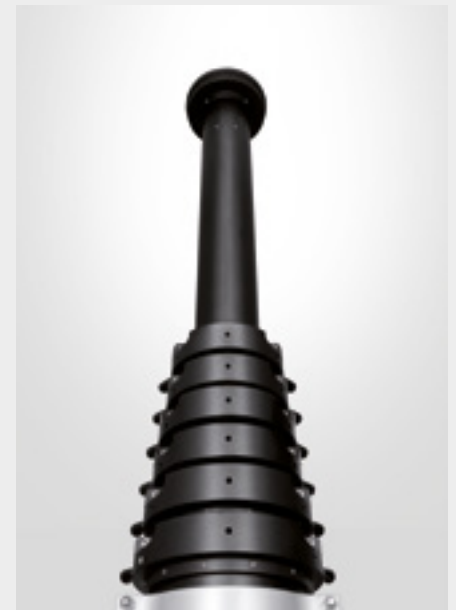
The steady masts are used in various sectors of application, such as:

- Military/Defence
- Security and Surveillance
- Communication
- and many others

Super Steady

After many years of experience in the construction of masts in the Steady version, Fireco were at the point to develop a new version of the mast, the **SUPER STEADY**.

Over time, requests for ever larger payloads, ever longer extension times and ever greater wind resistance have led Fireco to develop higher-performing locking and guying systems.



SUPER STEADY MASTS

Available for masts from Ø115 to Ø250mm. The standard finish and colour is silver-grey anodised: other colours and finishes are available on demand.



Locking system

The innovative **mechanical locking system Super Steady** is composed by two locking levers that, once turned, allow the insertion of the levers in two

slots on the tube. In addition, there are security screws that prevent the levers from rotating accidentally and thereby guarantee a more secure use.



Behaviour under vertical forces and the guying system with M12 eyebolts

Thanks to the standardized mechanical locking system, the use of new M12 eyebolts and the ropes in steel or synthetic material, the Super Steady masts resist to even greater forces.

Thus, the Super Steady configuration guarantees security and stability and improves the masts' performances in many applications.

Accessories Steady & Super Steady



EXTERNAL CABLE GUIDES

For certain applications the Steady masts might require electric and/or data cables. If an internal cable solution was not feasible or the requested cable was not part of the Fireco range, the cable guides on every mast collar would make sure that the cable remains attached and bound to the mast.



SAND SCRAPERS

In dusty and/or harsh environments the sand scrapers are used to prevent dirt and dust from entering into the Steady masts. They consist of an additional gasket set that allows to maintain a clean and hermetic mast.





M10 OR M12 EYEBOLTS FOR GUYING

For security reasons and to obtain a greater stability for the mast, Fireco recommends the use of guying ropes in certain applications. To this end the Steady masts can be provided with M10 eyebolts and the Super Steady masts with M12 eyebolts on top of the mast and/or on the fixed or turnable mast collars.



MAST HEAD CONFIGURATIONS

Depending on the model, different mast head configurations are available. Among these a plain head with 4 serial holes, a head with 4+8 holes or as an optional a PIN head Ø24mm, to meet the requirements for the installation of various equipment, from antennas to video cameras.

ITALY

Fireco S.r.l.

Via E.Fermi, 56 - 25064
GUSSAGO (BS) - ITALY
Tel.:+39 030 3733916
Fax:+39 030 3733762
info@fireco.eu
www.fireco.eu

USA

Tempest Fireco Towers LLC

4708 N. Blythe Ave
FRESNO, CA 93722 - USA
Tel.:+1 5592777577 ext. 115
Fax:+1 5592777579
response@tempest.us.com
www.tempestfirecotowers.com

BELGIUM

Fireco Systems N.V.

Diestersteeuweg, 142
3510 KERMT (HASSELT) - BELGIUM
Tel.:+32 11851602
Fax:+32 11851604
info@fireco.be
www.fireco.be

MALAYSIA

Fireco Asia Sdn Bhd

9, Jalan TP 3/2, Taman Perindustrian UEP
47620 SUBANG JAYA - MALAYSIA
+603 8011 2300
+603 8081 2367
gc@fireco-asia.com
www.fireco-asia.com

FRANCE

Euromast S.a.r.l.

ZA du Pontet - 90, Allée des Erables
73420 DRUMETTAZ - CLARAFOND - FRANCE
Tel.:+33 479349215
Fax:+33 479349216
fireco@euromast.fr
www.euromast.fr

AUSTRALIA

EVTA Group PTY LTD

12 Meek Street,
NEW GISBORNE, VICTORIA, 3438 - AUSTRALIA
Tel.:+61 354207444
Fax:+61 354207834
info@evtagroup.com.au
www.evtagroup.com.au

SPAIN

His pamast, S.L.

C/Estaño, 30
28510 CAMPO REAL (MADRID) - SPAIN
Tel.:+34 918733733
Fax:+34 918765141
info@his pamast.com
www.his pamast.com



WWW.FIRECO.EU
